

**HARBOUR  
LANDING**  
*at resthaven*

**The Denman**

**3BD / 2.5BA**

**UNIT A - SOLD OUT**

**UNIT B**

**MAIN FLOOR**  
768 sq. ft.

**UPPER FLOOR TOTAL**  
962 sq. ft. 1,730 sq. ft.

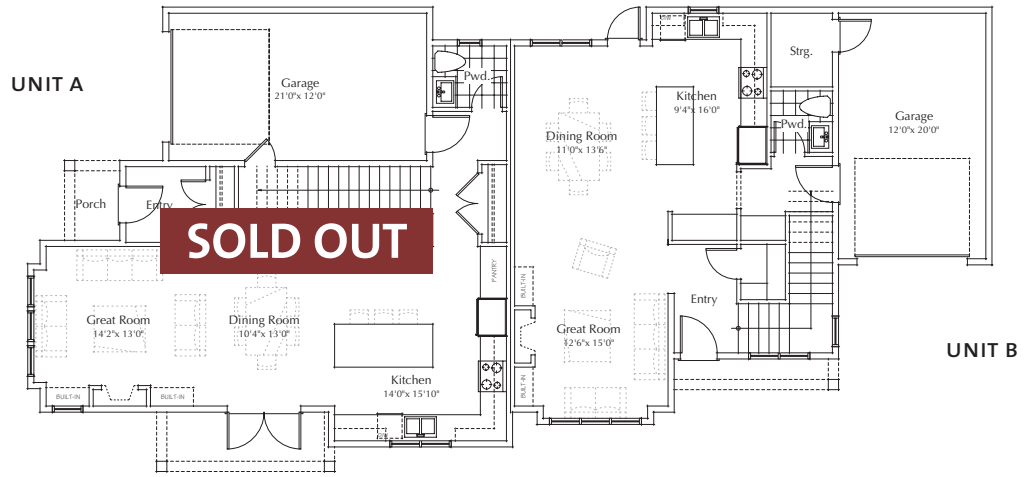
**THIS PLAN IS AVAILABLE ON LOT 16**



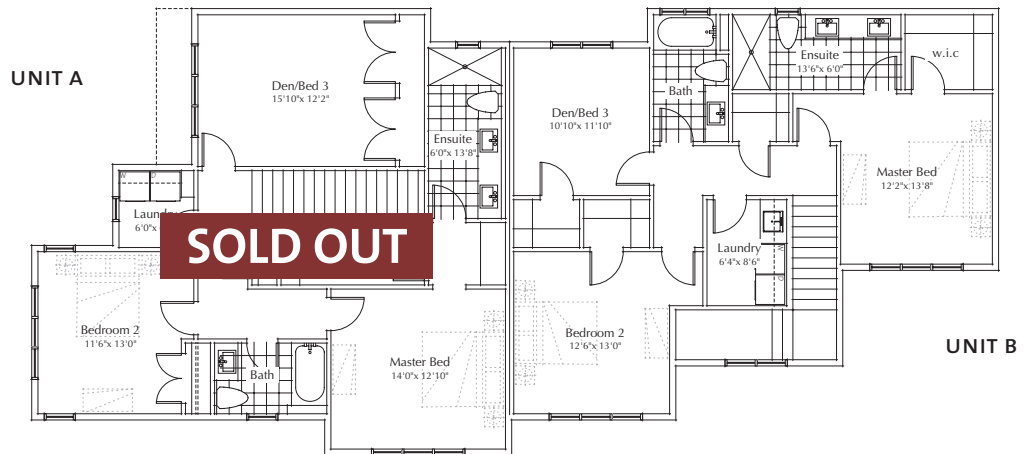
**UNIT A**  
(FACES WHITE BIRCH ROAD)



**UNIT B**  
(FACES SEAWIND WAY)



**MAIN FLOOR**



**UPPER FLOOR**



Peter Gaby & Mike Nugent  
**250-477-7291**

[HarbourLandingSidney.com](http://HarbourLandingSidney.com)

Square footage is from the architectural drawings, dimensions, sizes, specifications, layouts and materials are approximate only and are subject to change without notice E.& O.E.



**HARBOUR  
LANDING**  
*at resthaven*

# The Texada

**UNIT A**  
2BD / 2.5BA / OFFICE NOOK

**UNIT B**  
3BD / 2.5BA

**UNIT A**  
**MAIN FLOOR**  
848 sq. ft.  
**UPPER FLOOR** **TOTAL**  
683 sq. ft. 1,531 sq. ft.

**UNIT B - SOLD OUT**

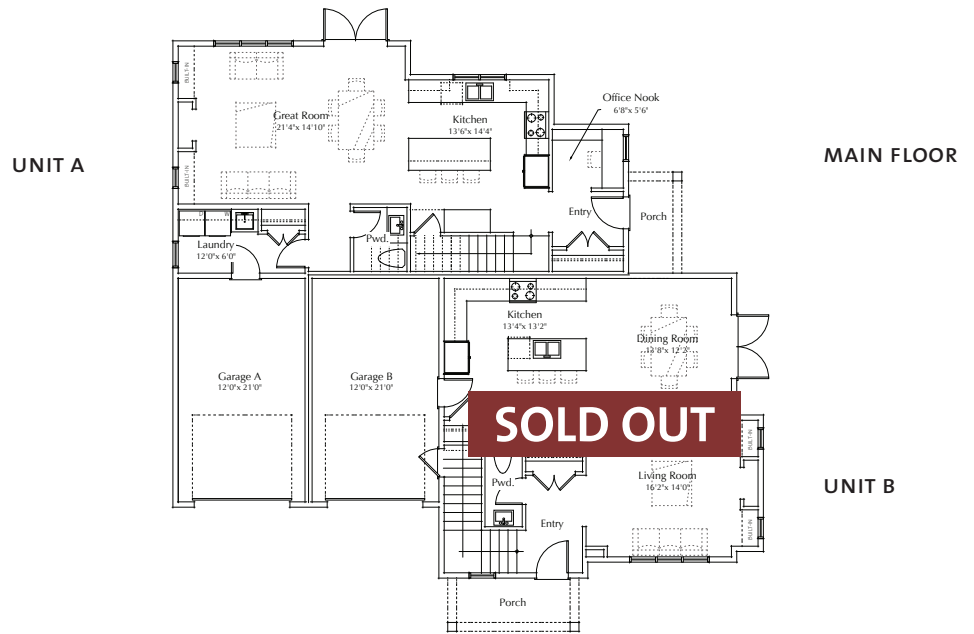
THIS PLAN IS AVAILABLE ON LOT 24



**EAST ELEVATION**



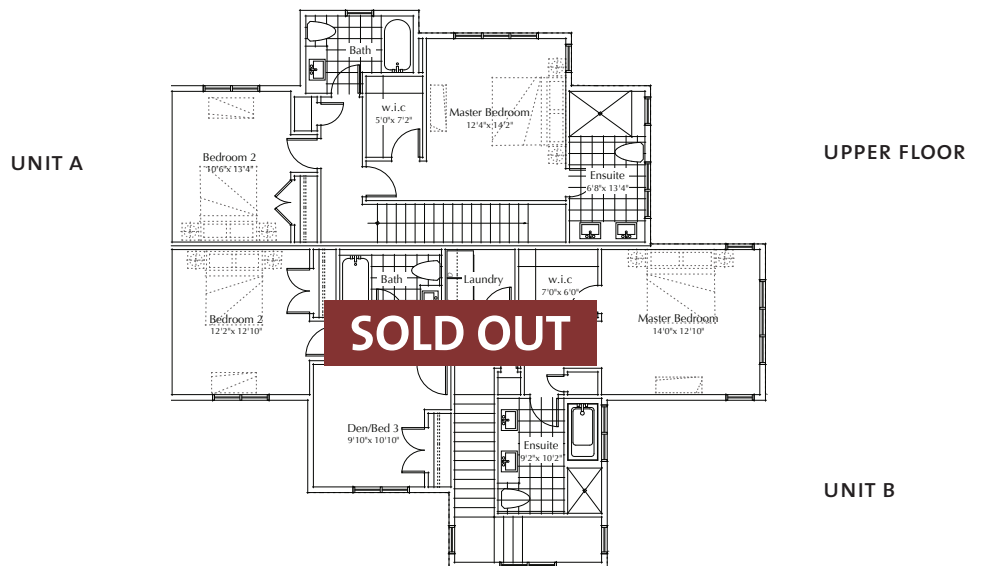
**SOUTH ELEVATION**



**UNIT A**

**MAIN FLOOR**

**UNIT B**



**UNIT A**

**UPPER FLOOR**

**UNIT B**



Peter Gaby & Mike Nugent  
**250-477-7291**

[HarbourLandingSidney.com](http://HarbourLandingSidney.com)

Square footage is from the architectural drawings, dimensions, sizes, specifications, layouts and materials are approximate only and are subject to change without notice E.& O.E.